

# OLYMPUS®

Changing The Face of Modern Medicine

ENT

## RHINO-LARYNGO FIBERSCOPE ENF TYPE T3

*2.2mm Instrument Channel With Increased Brightness And Sharper Resolution*



# A Valuable Aid For Observation, Diagnosis, And Treatments Such As Biopsy, Aspiration, And Removal Of Foreign Bodies

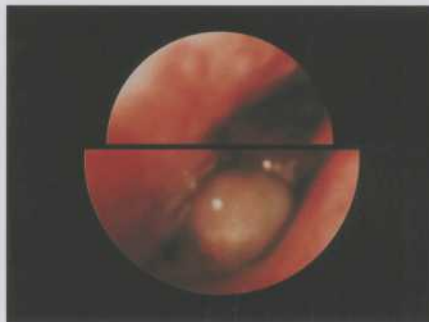
Remarkable Olympus improvement of brightness and resolution makes viewing with the ENF TYPE T3 more precise and accurate. It is designed for easy orientation to further facilitate delicate procedures.



**Resolution Improved Approx. 139%\***  
Vivid, powerfully precise images can now be obtained thanks to a major increase in image guide fibers. This astounding increase in resolution makes every procedure more accurate even as it reduces eye fatigue.

**Brightness Increased Approx. 150%\***  
Delicate procedures will especially benefit from images that have never been easier to see. With its 85° field of view, the ENF TYPE T3 offers optimal performance for observation from the nasopharynx to vocal cords.

**Secure Design**  
Completely sealed construction of the aspiration plug section assures that foreign matter will never enter the unit. Smooth surface contours further facilitate complete cleaning.



**Image Size Increased Approx. 24%\***  
To the benefits of improved resolution and enhanced brightness, Olympus adds increased image size as well. These three factors combined serve to reduce eye fatigue to an unprecedented degree.

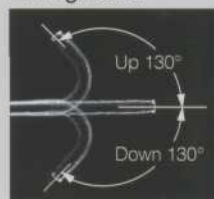


**Channel Diameter Increased 0.2mm\***  
While maintaining the same outside diameter, Olympus has been able to increase the instrument channel from 2.0mm to 2.2mm. This modification eases instrument insertion and improves aspiration capabilities.  
\* As compared to previous model.

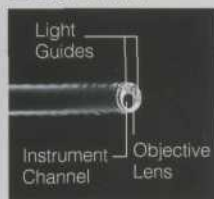
## ■ Biopsy Forceps

Fenestrated	Fenestrated With Needle	Ellipsoid	Alligator Jaws
FB-19C-1	FB-34C-1	FB-21C-1	FB-15C-1

## ■ Angulation



## ■ Distal End



## ■ Specifications

Optical System	Field Of View	85°
	Direction Of View	0° (forward viewing)
	Depth Of Field	5 - 50mm
	Illumination Method	Light Guide System
Distal End	Outer Diameter	4.8mm
	Bending Section	Range Of Tip Bending
Insertion Tube	Outer Diameter	5mm
Working Length		365mm
Total Length		585mm
Instrument Channel	Inner Diameter	2.2mm
Biopsy Forceps	Minimum Visible Distance	5mm from distal end
Photo Documentation	Still	OES Instant Camera Olympus SCP-10 (with SCP Adapter AR-P10)
		35mm SLR Camera SC35/OM1N (with OM AE Adapter SM-ER3)
TV		OES TV System
		Olympus OTV-SC/OTV-S5/OTV-S6

Specifications, design and accessories are subject to change without any notice or obligation on the part of the manufacturer.

## Olympus business areas



Medical and health-care area



Imaging and information area



Industrial applications area

# OLYMPUS®

FOCUS ON LIFE

**OLYMPUS OPTICAL CO., LTD.**  
2951 Ishikawa-cho, Hachioji-shi, Tokyo 192-8507, Japan  
**OLYMPUS OPTICAL CO. (EUROPA) GMBH.**  
Postfach 10 49 06, 20034 Hamburg / Wendenstrasse 14-18, 20097 Hamburg, Germany  
**OLYMPUS AMERICA INC.**  
2 Corporate Center Drive, Melville, N.Y. 11747-3157, U.S.A.  
**OLYMPUS KEYMED**  
Keymed House, Stock Road, Southend-on-Sea, Essex SS2 5QH, England  
**OLYMPUS WINTER & IBE GMBH**  
Kuehnstrasse 61, 22045 Hamburg, Germany  
**OLYMPUS SINGAPORE PTE LTD.**  
491B, River Valley Road, #12-01/04, Valley Point Office Tower, Singapore 248373  
**OLYMPUS HONG KONG AND CHINA LIMITED.**  
Room 1520-1527, Ocean Centre, 5 Canton Road, Tsimshatsui, Kowloon, Hong Kong  
**OLYMPUS BEIJING REPRESENTATIVE OFFICE**  
Rm. 818, South Tower, Beijing Kerry Centre, No.1 Guanghua Road, Chaoyang District, Beijing, 100020, China  
**OLYMPUS MOSCOW LIMITED LIABILITY COMPANY**  
117071, Moscow, Malaya kaluzhskaya 19, bld. 1, fl. 2, Russia  
**OLYMPUS AUSTRALIA PTY. LTD.**  
1/104 Ferntree Gully Road, Oakleigh, VIC 3166, Australia

<http://www.olympus.com>

Printed in Japan R198UB-0202