

Gastrointestinal Videoscope

GIF-1100

Slimmer Design with Outstanding Image Clarity





Slimmer Design with Outstanding Image Clarity

Slimmer Design

With a thinner insertion tube diameter of 8.9 mm, the GIF-1100 promises improved insertability and reduced patient discomfort without compromising performance. Even with the new slimmer design, the GIF-1100 includes features like a Close Focus function down to 2 mm and features a 2.8 mm wide instrument channel and water jet function to support effective observation and treatment capability.



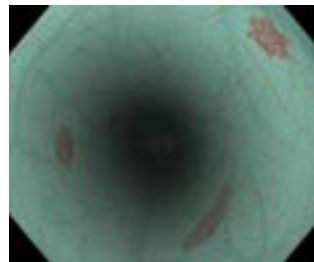
TXI



White Light

Improved Image Quality and Innovative Observation Mode with CV-1500

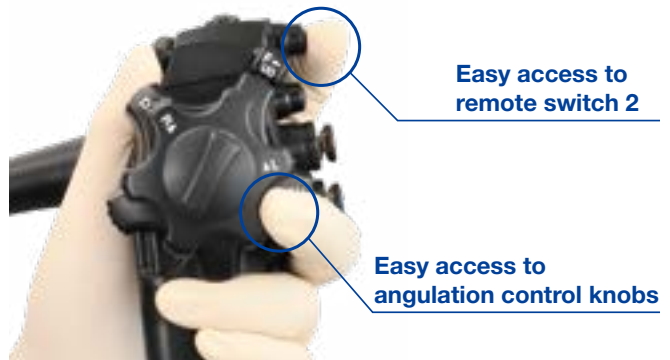
When the GIF-1100 is combined with the CV-1500 Video Processor, the processor's 5-LED light source offers innovative observation modes, —TXI (Texture and Color Enhancement Imaging), RDI (Red Dichromatic Imaging) and NBI (Narrow Band Imaging)— while its noise reduction system enables clear observation with less noise.



NBI

ErgoGrip

The ergonomically designed handle provides a comfortable and stable grip, lighter weight, and greater ease in reaching the angulation control knobs and scope switches.

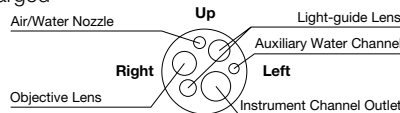


Other Features

- Close Focus · WaterJet
- Waterproof One-touch Connector

Specifications

Optical System	Field of view	140°	
	Direction of view	Forward viewing	
	Depth of field	2–100	
Insertion Section	Distal end outer diameter	ø 8.9 mm	
	Distal end enlarged		
Instrument Channel	Insertion tube outer diameter	ø 8.9 mm	
	Working length	1030 mm	
	Channel inner diameter	ø 2.8 mm	
	Minimum visible distance*1	3 mm from the distal end	
	Direction from which endotherapy accessories enter and exit the endoscopic image		
	Auxiliary Water Channel	Direction from which water jet appears in the endoscopic image	
	Bending Section	Angulation range	Up 210° / Down 90° / Right 100° / Left 100°
		Total Length	1350 mm
		Compatible System	Video system center OLYMPUS CV-1500 Video system center OLYMPUS CV-190/CV-190 Plus Xenon light source OLYMPUS CLV-190



*1 Distance from the distal end of the endoscope.



GASTROINTESTINAL VIDEOSCOPE OLYMPUS GIF-1100

Specifications, design, and accessories are subject to change without any notice or obligation on the part of the manufacturer.