

**OLYMPUS**<sup>®</sup>

Your Vision, Our Future

**EVIS EXERA III**

EVIS EXERA III GASTROINTESTINAL VIDEOSCOPE

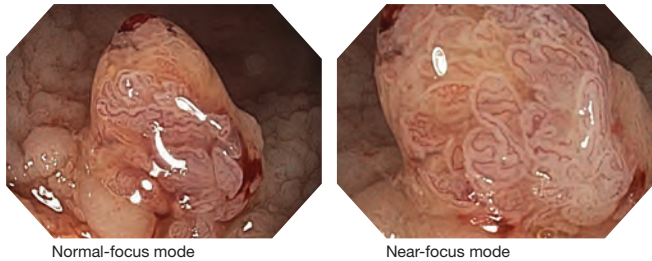
# GIF-HQ190

Amazing image quality for upper GI endoscopy



## Dual Focus

Dual Focus, a unique Olympus optical innovation, allows the user to select from two focus settings. With the simple push of a scope button, the desired depth of field for observation can be optimized to either the near field or normal field.

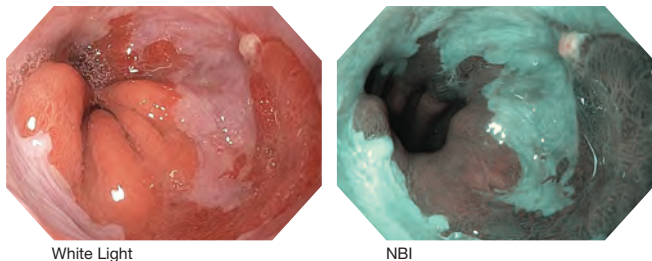


## Enhanced Image Quality

Improved optics, a brighter image, increased contrast, reduced noise, and reduced halation are the result of a new CCD available in the EVIS EXERA III, providing superior image quality even during electronic zoom.

## NBI (Narrow Band Imaging)

NBI in EVIS EXERA III 190 Series scopes provides twice the viewable distance of EVIS EXERA II 180 Series scopes and is significantly brighter. HD NBI provides contrast, which may aid in the interpretation of mucosal morphology, vascular patterns, and blood vessel appearance in patients with Barrett's esophagus.



## Water Jet

EVIS EXERA III 190 Series scopes' forward water jet function is standard on all routine gastroscopes.



## Waterproof One-touch Connector

A new connector design minimizes the effort required for setup prior to and in between cases. In addition, it is fully submersible and eliminates the need for a water-resistant cap and the associated risk of an expensive repair due to accidental immersion.



Optical System	Field of view	Normal 140° Near 140°
	Direction of view	Forward viewing
	Depth of field	Normal 5-100 mm
		Near 2-6 mm
Insertion Section	Distal end outer diameter	9.9 mm
	Distal end enlarged	
	Insertion tube outer diameter	9.9 mm
	Working length	1030 mm

Instrument Channel	Channel inner diameter	2.8 mm
	Minimum visible distance	3.0 mm from the distal end
Bending Section	Direction from which endotherapy accessories enter and exit the endoscopic image	
		Up 210°
		Down 90°
		Right 100° Left 100°
Total Length	1350 mm	
Compatible EVIS EXERA System	Video System Center OLYMPUS CV-190 Xenon Light Source OLYMPUS CLV-190	

Dual Focus images courtesy of Roy Soetikno, MD.  
 NBI images courtesy of Horst Neuhaus, MD.

Specifications, design, and accessories are subject to change without any notice or obligation on the part of the manufacturer. Olympus is a registered trademark of Olympus Corporation, Olympus America Inc., and/or their affiliates.