

Colonovideoscope

CF-XZ1200L/I

An Innovative Colonoscope with 135x*1 Optical Magnification

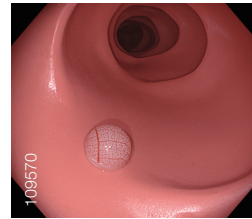




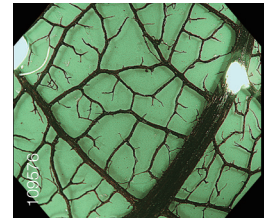
An Innovative Colonoscope with 135x*1 Optical Magnification

Optical 135x Magnification

The CF-XZ1200L/I is a state-of-the-art magnifying colonoscope that enables visualization of the finest details of suspicious lesions with up to 135x*1 magnification. This advanced optical performance is boosted by NBI (Narrow Band Imaging) capability for even more discriminating observation, supporting increased diagnostic accuracy and confidence.



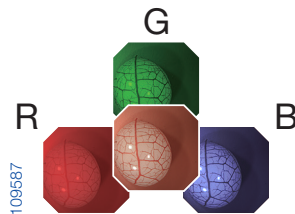
White Light Image



Optical 135x magnification with NBI

High FPS (Frame Per Second) Mode

The CF-XZ1200L/I uses a sequential scanning method to produce endoscopy images. In addition, thanks to the incorporation of a proprietary CMOS chip, the CF-XZ1200L/I features a High FPS (Frame Per Second) Mode*2 that can capture images at 120 frames per second. This helps minimize flickering and color fringing.



Precise Magnification Control by Zoom Lever

The provided manual zoom lever allows you to manipulate the zoom lever and adjust the magnification ratio with greater precision to obtain a magnified endoscopic image that better suits your needs.



Distal Hood MAJ-1991

For best results, we recommend use of the Distal Hood MAJ-1991. Especially helpful with magnifying endoscopes, this attachment helps maintain an optimal distance to the mucosa, thereby making it easier to stay in focus.



Other Features

- ErgoGrip – Improved Control Section
- RIT (Responsive Insertion Technology)
- Compatible with TXI, RDI, NBI when connected to the CV-1500
- 170° wide viewing angle
- Waterproof One-Touch Connector

*1 With OEV321UH 4K UHD LCD MONITOR. *2 Only available when connected to CV-1500.

Specifications		
Optical System	Field of view	Wide: 170° Tele: 90°
	Direction of view	Forward viewing
	Depth of field	Normal : 7 - 100 mm Tele : 1 - 2 mm
Insertion Section	Distal end outer diameter	ø 13.2 mm
	Distal end enlarged	
	Insertion tube outer diameter	ø 12.8 mm
	Working length	L: 1680 mm I: 1330 mm
Instrument Channel	Channel inner diameter	ø 3.7 mm
	Minimum visible distance*3	3 mm (Normal focus mode)
	Direction from which EndoTherapy accessories enter and exit the endoscopic image	
Auxiliary Water Channel	Direction from which water jet appears in the endoscopic image	

Bending Section	Angulation range	Up 180° / Down 180° / Right 160° / Left 160°
Total Length	L: 2005 mm I: 1655 mm	
Compatible System	Video System Center CV-1500	
	Video System Center CV-290	
	Light Source CLV-290SL, CLV-290	

*3 Distance from the distal end of the endoscope.



EVIS X1 COLONOVIDEOSCOPE CF-XZ1200L/I

As medical knowledge is constantly growing, technical modifications or changes of the product design, product specifications, accessories and service offerings may be required.